



Beaver County Service Centre
5120 - 50 Street Box 140
Ryley, Alberta T0B 4A0
Monday to Friday
8:30 a.m. - 4:30 p.m.

Phone: (780) 663-3730
Fax: (780) 663-3602
Toll Free: 1-866-663-1333
www.beaver.ab.ca
Email: administration@beaver.ab.ca

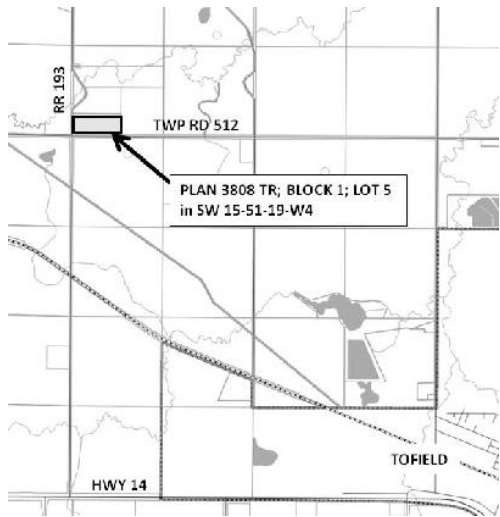
Notice of Public Hearing

BEAVER COUNTY NOTICE OF PUBLIC HEARING

For the purpose of hearing arguments for and against a proposed amendment to Beaver County Land Use Bylaw 98-801.

Bylaw 17-1046 Proposed MDP and LUB Amendments in SW 15-51-19-W4

Beaver County Council has received a request from a landowner to amend the Municipal Development Plan (MDP) and Land Use Bylaw (LUB) to allow one additional parcel to be subdivided in a previously subdivided parcel in Plan 3808 TR; Block 1; Lot 5 on the SW 15-51-19-W4 (creating a total of seven (7) lots in the SW quarter).



Council will hear arguments for and against the proposed MDP and LUB amendments at a public hearing scheduled for **10:30 am, Monday, April 24, 2017, at the Beaver County Service Centre in Ryley, Alberta.**

A copy of Bylaw 17-1046 may be obtained at the Beaver County Service Centre or on the County's website at www.beaver.ab.ca. Written submissions may be provided to Beaver County Council during the public hearing, however it is requested that a copy of the written submission be delivered to the Service Centre (5120-50 Street, Ryley), attention the Chief Administrative Officer, no later than **4:30 pm, Tuesday, April 18, 2017.**

If you submit comments regarding the bylaw in writing, the information you provide may be made public, subject to the provisions of the *Freedom of Information and Protection of Privacy Act*.

Bob Beck, Chief Administrative Officer
Beaver County
Box 140
Ryley, AB
T0B 4A0

Crop Insurance Meeting

Looking for options when dealing with un-harvested crops?
Questions about AFSC and crop insurance? Thinking of burning in the fields this spring?

Beaver County is hosting a Producer Meeting to discuss these questions and more.

Tuesday, April 25
7 - 9 pm

Holden Community Hall

For more information contact Aimee Boese at 780-663-3730.

Employment Opportunity

Beaver County – Community Development

Position: Campground Labourer/Receptionist

Duties may include but are not limited to:

- Mowing, brush and weed removal
- Campsite & beach clean up
- Cleaning (washrooms, showers, etc..)
- General concession duties
- Administration duties
- Promote and maintain the County's online business directory
- Create and manage marketing messages for the County's website, Facebook, Twitter, etc
- Attend events (may consist of occasional weekends)
- Other duties as assigned

Operation of motor vehicles, mowers, and other equipment will be required.

Employment Terms/Approximate Start Date:

35 hour work week, including some weekends. May to Mid-August 2017

Qualifications:

Candidates must have a valid class 5 driver's license, good interpersonal and record keeping skills as well as knowledge of operating small equipment. Must be able to work independently and assume responsibility. Knowledge of Microsoft Office and basic computer skills an asset.

Competition closing date: This opportunity will remain open until a suitable candidate is found.

Please submit a cover letter, resume and references to:

Susan Lungal
Community Development Coordinator
Box 140
Ryley, AB, T0B 4A0
E-mail: slungal@beaver.ab.ca
Ph: (780) 663-3730
Fax: (780) 663-3602

We thank all applicants for their interest, however only those selected for an interview will be contacted.

Notice for Herbicide Tenders

Beaver County is now accepting tenders for the supply of herbicide for its 2017 vegetation management program. Tenders clearly marked "To Provide Herbicide for the 2017 Beaver County Vegetation Management Program" shall be forwarded to:

Mike Bates
Agricultural Fieldman
Beaver County
Box 140, Ryley, AB
T0B 4A0
(780) 663-3730
mbates@beaver.ab.ca

OR

Aimee Boese
Agricultural Fieldman
Beaver County
Box 140, Ryley, AB
T0B 4A0
(780) 663-3730
aboese@beaver.ab.ca

Before 12:00 pm on Friday the 14th day of April 2017

Tender Packages are available on request at the Beaver County Service Centre.