

BEAVER COUNTY
BYLAW NO. 18-1061
AMENDMENT TO INTERMUNICIPAL DEVELOPMENT PLAN

A BYLAW OF BEAVER COUNTY
IN THE PROVINCE OF ALBERTA,
FOR THE PURPOSE OF
AMENDING BYLAW 08-943
BEING THE VILLAGE OF RYLEY / BEAVER COUNTY
INTERMUNICIPAL DEVELOPMENT PLAN

WHEREAS, Section 631(1) of the *Municipal Government Act*, Chapter M-26 of Revised Statutes of Alberta 2000 (Act), authorizes two or more Councils to each pass a Bylaw to adopt an Intermunicipal Development Plan;

WHEREAS, Council previously adopted the Village of Ryley/Beaver County Intermunicipal Development Plan Bylaw 08-943;

WHEREAS Section 191 of the Act, authorizes the Council of Beaver County to amend an Intermunicipal Development Plan to address future land use within the municipality;

WHEREAS Sections 632 and 633 of the Act, requires that all statutory plans adopted by the Council of Beaver County be consistent with other statutory plans;

WHEREAS, Council deems it desirable to amend the Village of Ryley/Beaver County Intermunicipal Development Plan Bylaw 08-943;

WHEREAS, notice of the proposed Bylaw and Public Hearing was given pursuant to Section 692 of the Act;

NOW THEREFORE, the Municipal Council of Beaver County, duly assembled, hereby enacts as follows:

1. The Village of Ryley/Beaver County Intermunicipal Development Plan Bylaw 08-943, shall be amended as follows:

- a. Delete Section (G) Land Use Policies; Subsection (4), Subclause (ii), and replace with the following:

Subdivision and development of those areas identified for general industrial, commercial and light industrial activities shall include those uses identified and meet the regulations stated, within the Beaver County Land Use Bylaw.

- b. Delete Section (G) Land Use Policies; Subsection (4), Subclause (iii).

- c. Delete Section (G) Land Use Policies; Subsection (4), Subclause (iv), and replace with the following:

Subdivision and development of those areas identified for landfill and related uses shall include those uses identified, and meet the regulations stated, for the Landfill and Composting District within Beaver County's Land Use Bylaw.

- d. In Section (G) Land Use Policies; Subsection (4), insert the following after Subclause (iv):

Subdivision and development of those areas identified for industrial park activities shall include those uses identified and meet the regulations stated, within the Equity Industrial Park Area Structure Plan and Beaver County's Land Use Bylaw.

- e. Schedules "B", "C" and "D" shall be deleted.
- f. Maps 1 and 2 shall be deleted and replaced with Maps 1 and 2 in Schedule A attached and forming part of this bylaw.

READ A FIRST TIME this 19th day of September, 2018.

PUBLIC HEARING HELD this 13th day of November, 2018.

READ A SECOND TIME this 28th day of November, 2018.

READ A THIRD TIME this 28th day of November, 2018.

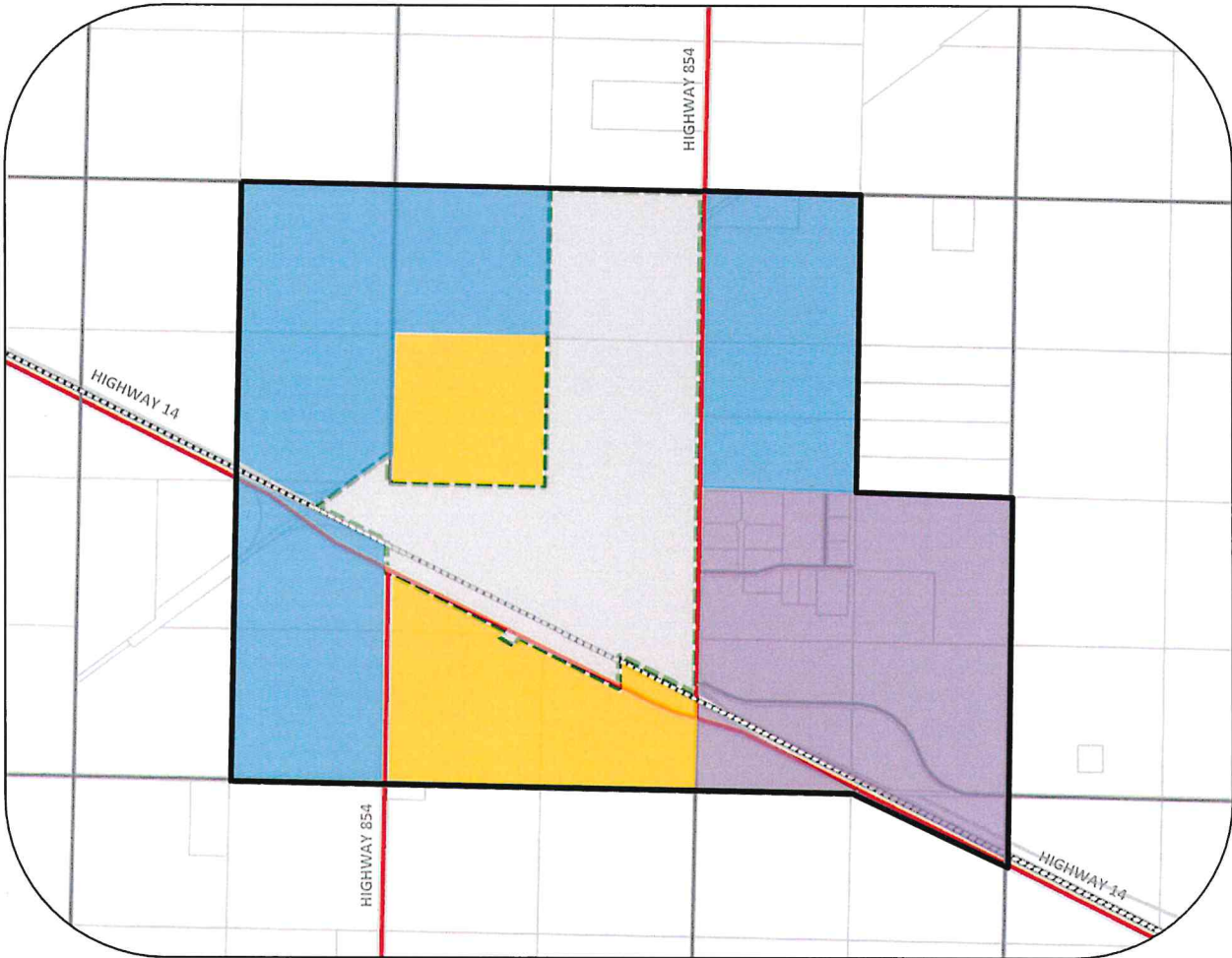


REEVE



CHIEF ADMINISTRATIVE OFFICER

Map 1 – Plan Area Boundaries

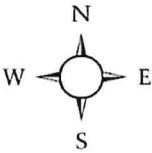


BEAVER COUNTY & VILLAGE OF RYLEY
INTER-MUNICIPAL DEVELOPMENT PLAN
MAP 1 – PLAN AREA BOUNDARIES

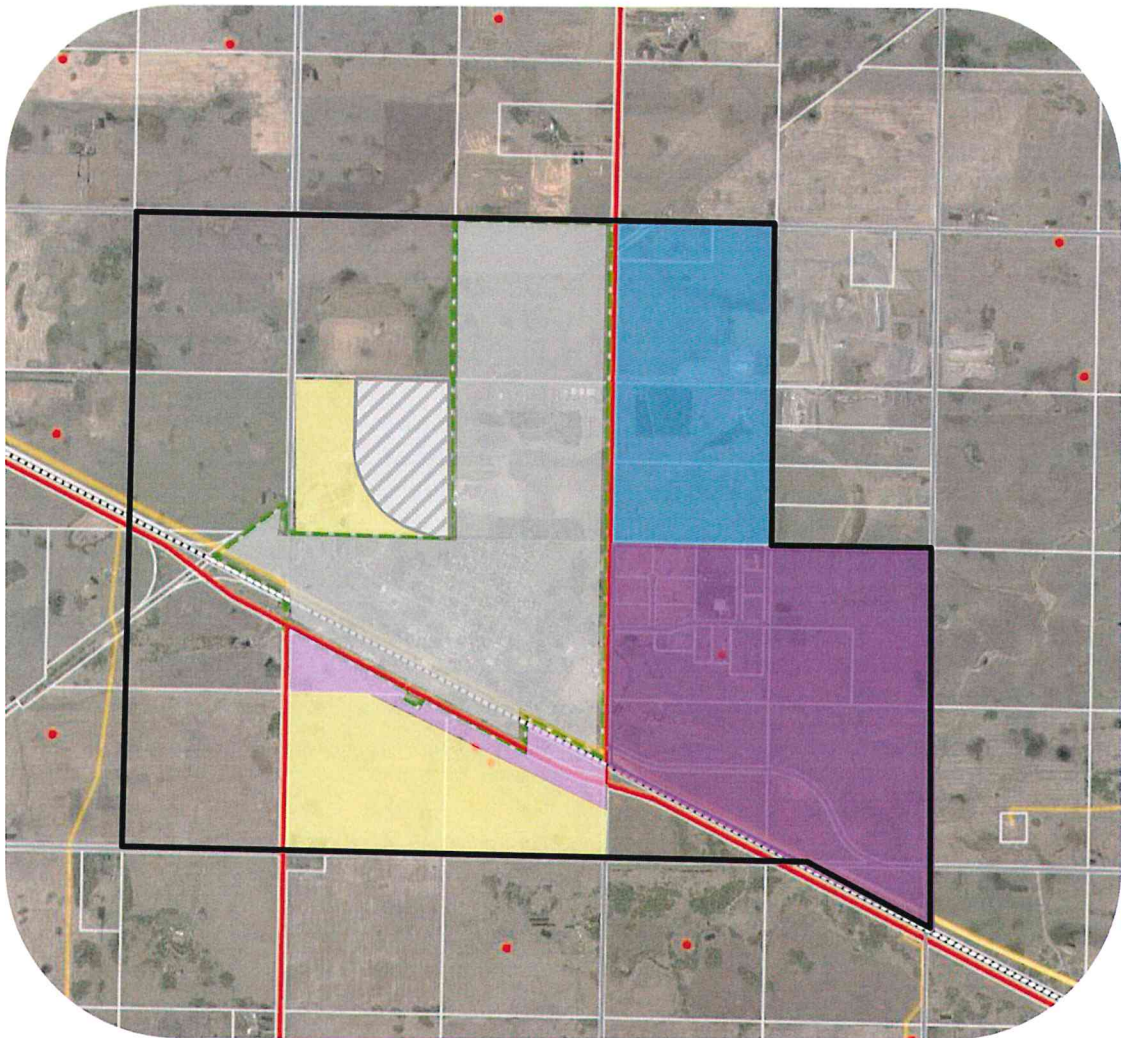
Map Legend

- | | |
|--------------------|-------------------------|
| HIGHWAY | URBAN FRINGE AREA |
| MUNICIPAL BOUNDARY | REFERRAL AREA |
| TITLED PARCELS | COUNTY DEVELOPMENT AREA |
| | PLAN AREA |

September 2018
Scale 1:25000



Map 2 – Land Use Concept



BEAVER COUNTY & VILLAGE OF RYLEY
INTER-MUNICIPAL DEVELOPMENT PLAN
MAP 2 – FUTURE LAND USE CONCEPT

Map Legend

- HIGHWAY
- MUNICIPAL BOUNDARY
- TITLED PARCELS
- PLAN AREA
- OIL AND GAS WELL
- HIGH PRESSURE PIPELINE

FUTURE LAND USE

- RESIDENTIAL
- COMMERCIAL/LIGHT INDUSTRIAL
- GENERAL INDUSTRIAL
- INDUSTRIAL PARK
- 450 m RESIDENTIAL DEVELOPMENT SETBACK

September 2018
Scale 1:25000

